



- TACT SWITCH
- PUSH BUTTON SWITCH
- LED TOUCH SENSOR SWITCH
- 5 DIRECTION NAVIGATION SWITCH WITH LED
- MEMBRANE SWITCH
- LED LIGHT BAR
- SLIDE SWITCH
- ROTARY SWITCH
- ROCKER SWITCH
- DETECT SWITCH
- ENCODER
- INTERRUPTER
- MINIATURE MICRO SWITCH
- TELEPHONE HOOK SWITCH
- DOOR SWITCH
- MINI SIZE SOCKET
- KNOB
- CAP SYMBOL

Feature :

- Noiseless, conductive rubber
- Light click feeling
- Full color LED illuminated available
- Long electrical life cycles

Application :

- Audio / video products
- Instrumentation
- Communication equipments

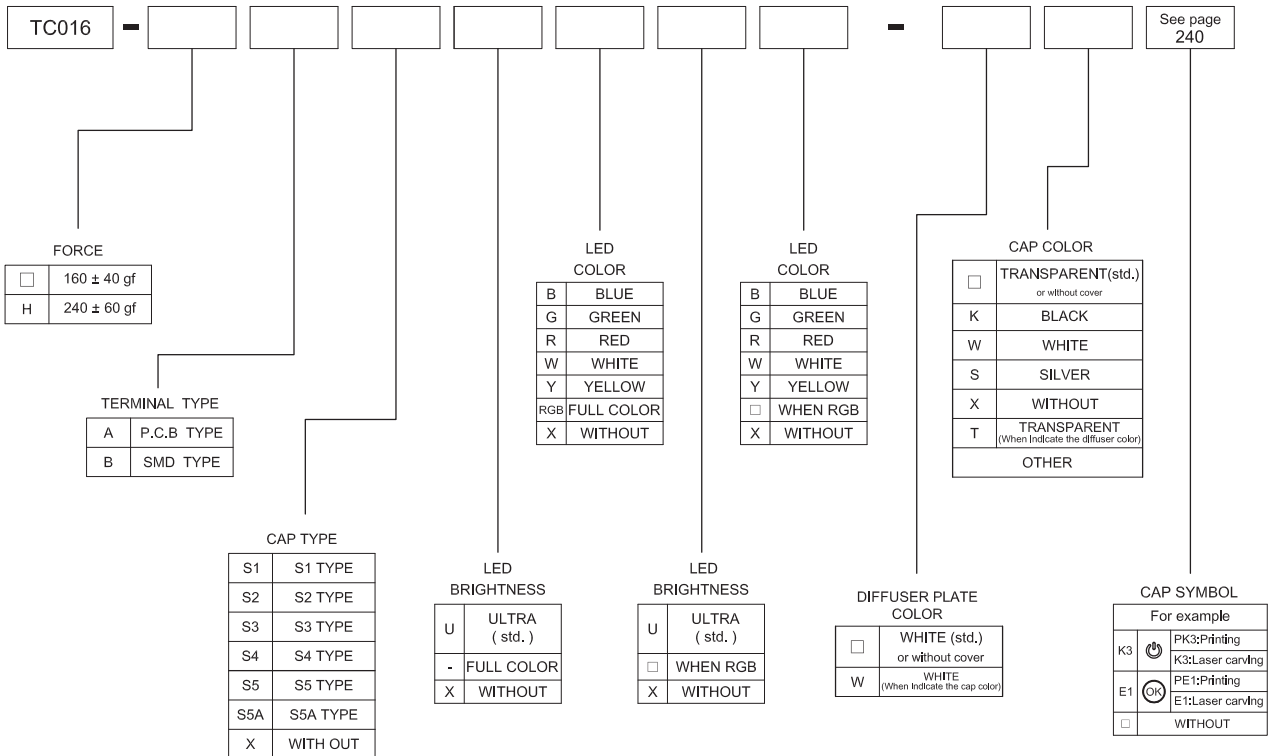


| SWITCH SPECIFICATIONS | |
|-----------------------------|---|
| POLE - POSITION | OFF - <ON> for Momentary Type , SPST |
| CONTACT RATING | 1mA 20V DC |
| CONTACT RESISTANCE | 200Ω MAX. |
| INSULATION RESISTANCE | 100 MΩ min, 100 V DC |
| DIELECTRIC STRENGTH | Breakdown is not Allowable ; 250 V AC for 1 Minute |
| OPERATING FORCE | 160 ± 40 gf , 240 ± 60 gf |
| OPERATING LIFE | 500,000 cycles |
| OPERATING TEMPERATURE RANGE | -40°C ~ 85°C |
| TOTAL TRAVEL | 1.6 ± 0.3 mm |

| LED SPECIFICATIONS | | | | | | | | |
|---|------|-------------------|---------------|------|--------|--------|-------|-------|
| ATTENTION LEDs are Electrostatic Sensitive devices (+) ○ — (+) ○ — (+) | Unit | Value / LED Color | | | | | | |
| | | Blue 5mA | Pure Green | Red | Yellow | Orange | Green | White |
| LUMINOUS INTENSITY@20mA Iv | mcd | 40 | 200 | 280 | 80 | 250 | 50 | 200 |
| Dominant Wavelength λD | nm | 470 | 525 | 630 | 590 | 601 | 568 | / |
| FORWARD VOLTAGE@20mA Vf | V | 3.3 | 3.3 | 1.95 | 2 | 2.1 | 2.1 | 3.3 |

■ A single bin cannot be ordered, please contact us in advance if you need a particular bin sorting before placing your order to clarify the lead time, MOQ and pricing

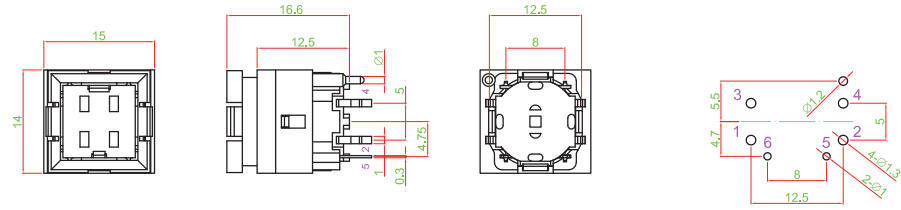
► HOW TO ORDER



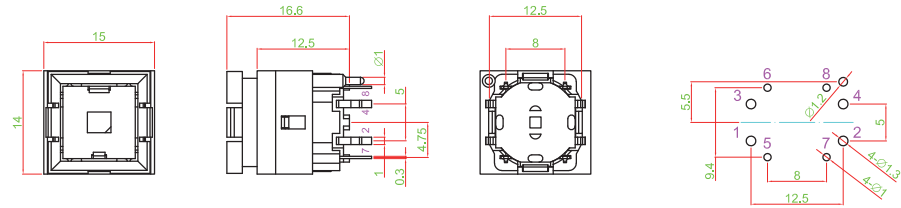


► TERMINAL TYPE

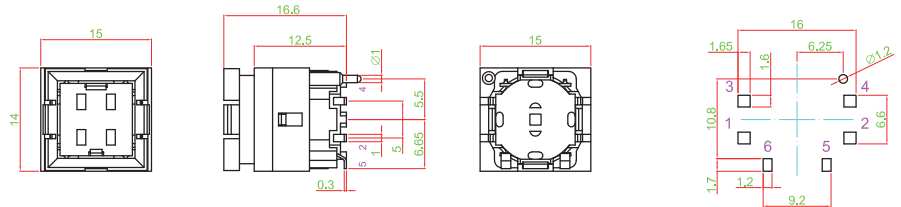
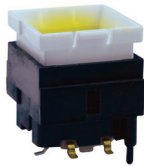
TC016-AX□□□□



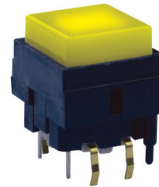
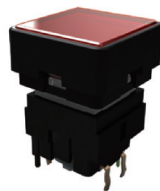
TC016-AX-RGB



TC016-BX□□□□



► CAP TYPE



S1 TYPE

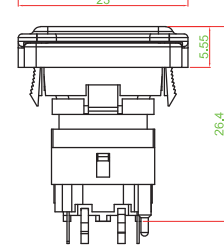
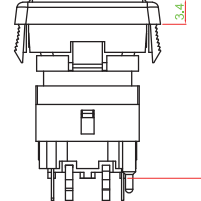
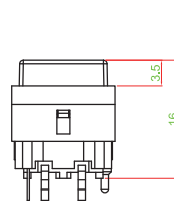
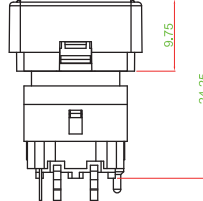
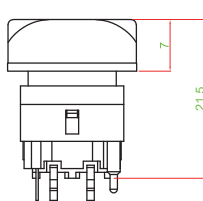
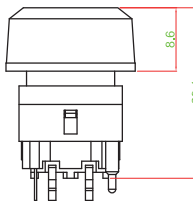
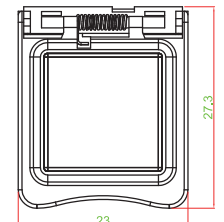
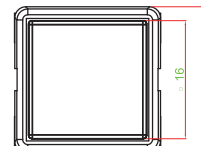
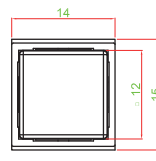
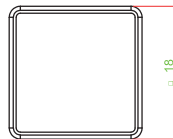
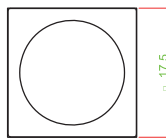
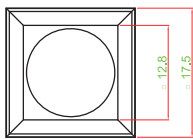
S2 TYPE

S3 TYPE

S4 TYPE

S5 TYPE

S5A TYPE

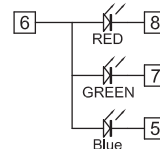
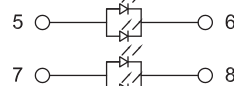
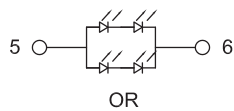
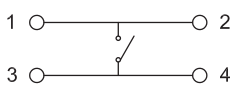


► CIRCUIT

SINGLE COLOR

TWO COLOR

FULL COLOR



| S5 & S5A PANEL CUT OUT | W |
|------------------------|-------------|
| PANEL THICK | W |
| 0.75 ~ 1.25 | 18.8 ~ 18.9 |
| 1.25 ~ 2.0 | 18.9 ~ 19.0 |
| 2.0 ~ 3.0 | 19.0 ~ 19.1 |

TACT SWITCH

PUSH BUTTON SWITCH

LED TOUCH SENSOR SWITCH

5 DIRECTION NAVIGATION SWITCH WITH LED

MEMBRANE SWITCH

LED LIGHT BAR

SLIDE SWITCH

ROTARY SWITCH

ROCKER SWITCH

DETECT SWITCH

ENCODER

INTERRUPTER

MINIATURE MICRO SWITCH

TELEPHONE HOOK SWITCH

DOOR SWITCH

MINI SIZE SOCKET

KNOB

CAP SYMBOL