

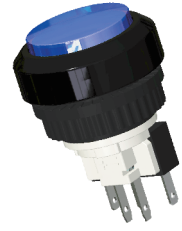


Feature :


- Multiple shapes available
- Panel mount design
- Illuminated LED and RGB color available
- High rating

Application :

- Gaming machine
- Car park ticket machine
- Vendor Machine
- Amusement park machine

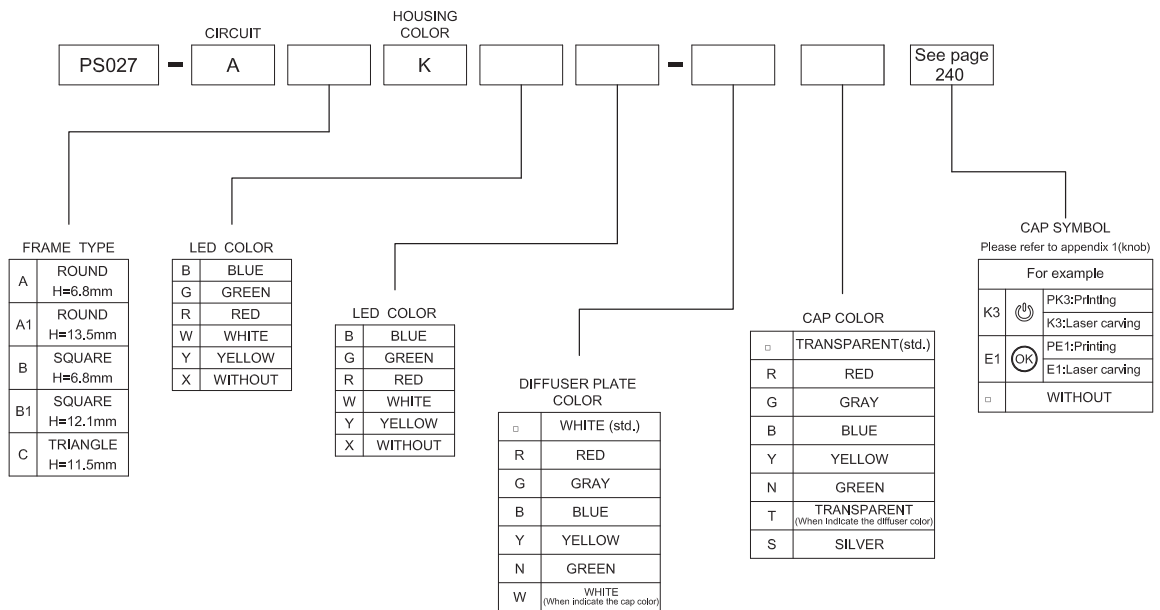


SWITCH SPECIFICATIONS	
POLE - POSITION	SPDT
CONTACT RATING	3A 125 / 250 VAC ; 3A 30 VDC
CONTACT RESISTANCE	300 mΩ MAX. 1.5 V DC ; 100 mA , by Method of Voltage DROP
INSULATION RESISTANCE	100 MΩ MIN. 500 V DC for 1 minute
DIELECTRIC STRENGTH	Breakdown is not Allowable ; 500 V AC for 1 Minute
OPERATING FORCE	250 gf MAX.
OPERATING LIFE	10,000 cycles
OPERATING TEMPERATURE RANGE	-40°C ~ 85°C
TOTAL TRAVEL / OPERATING TRAVEL	1.8 ± 0.3 mm / 1.3 ± 0.3 mm

LED SPECIFICATIONS								
ATTENTION LEDs are Electrostatic Sensitive devices  (+) ○ (−) ○ (−)	Unit	Value / LED Color						
		Blue	Pure Green	Red	Yellow	Orange	Green	White
LUMINOUS INTENSITY@20mA Iv	mcd	150	1000	800	350	700	900	330
Dominant Wavelength λD	nm	470	525	630	590	601	/	570
FORWARD VOLTAGE@20mA Vf	V	3.7	3.5	2	2.1	2.1	3.5	2.1

■ A single bin cannot be ordered, please contact us in advance if you need a particular bin sorting before placing your order to clarify the lead time, MOQ and pricing

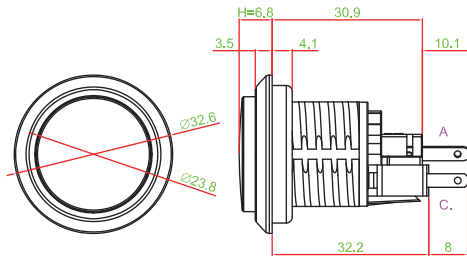
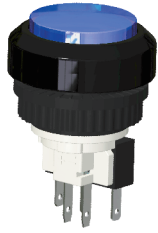
▶ HOW TO ORDER



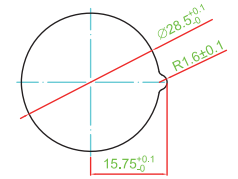


► DIMENSION

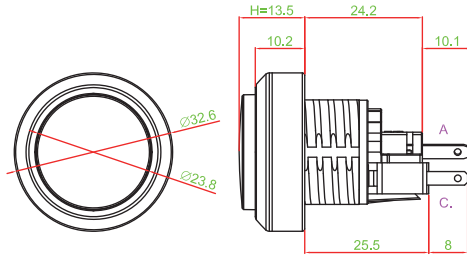
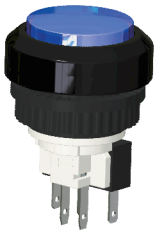
PS027-AAK □□



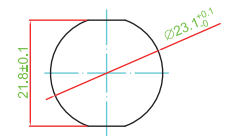
PANEL CUT OUT
THICKNESS=4.5MIN.



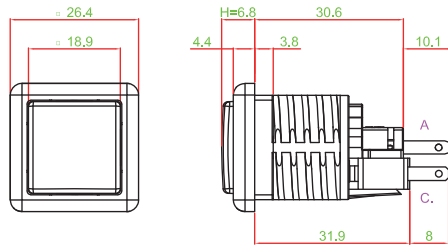
PS027-AA1K □□



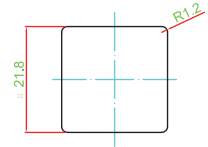
PANEL CUT OUT



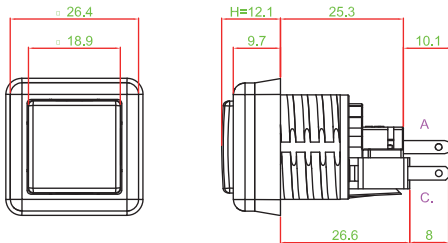
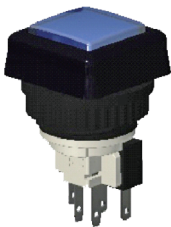
PS027-ABK □□



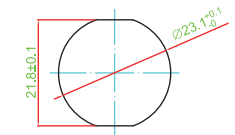
PANEL CUT OUT
THICKNESS=4.2MIN.



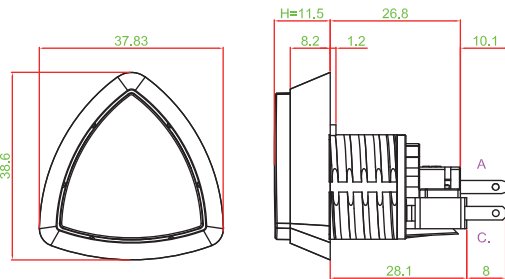
PS027-AB1K □□



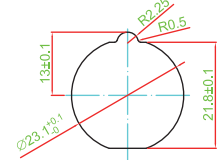
PANEL CUT OUT



PS027-ACK □□



PANEL CUT OUT
THICKNESS=1.5MIN.



► CIRCUIT



► NUT



- TACT SWITCH
- PUSH BUTTON SWITCH
- LED TOUCH SENSOR SWITCH
- 5 DIRECTION NAVIGATION SWITCH WITH LED
- MEMBRANE SWITCH
- LED LIGHT BAR
- SLIDE SWITCH
- ROTARY SWITCH
- ROCKER SWITCH
- DETECT SWITCH
- ENCODER
- INTERRUPTER
- MINIATURE MICRO SWITCH
- TELEPHONE HOOK SWITCH
- DOOR SWITCH
- MINI SIZE SOCKET
- KNOB
- CAP SYMBOL