



TACT SWITCH
PUSH BUTTON SWITCH
LED TOUCH SENSOR SWITCH WITH LED
5 DIRECTION NAVIGATION SWITCH
MEMBRANE SWITCH
LED LIGHT BAR
SLIDE SWITCH
ROTARY SWITCH
ROCKER SWITCH
DETECT SWITCH
ENCODER
INTERRUPTER
MINIATURE MICRO SWITCH
TELEPHONE HOOK SWITCH
DOOR SWITCH
MINI SIZE SOCKET
KNOB
CAP SYMBOL

Feature :

- Good actuation feeling
- Full color LED illuminated available
- Long electrical life cycles
- SPDT or DPDT, lock / non-lock function

Application :

- Audio / video products
- Instrumentation
- Communication equipments

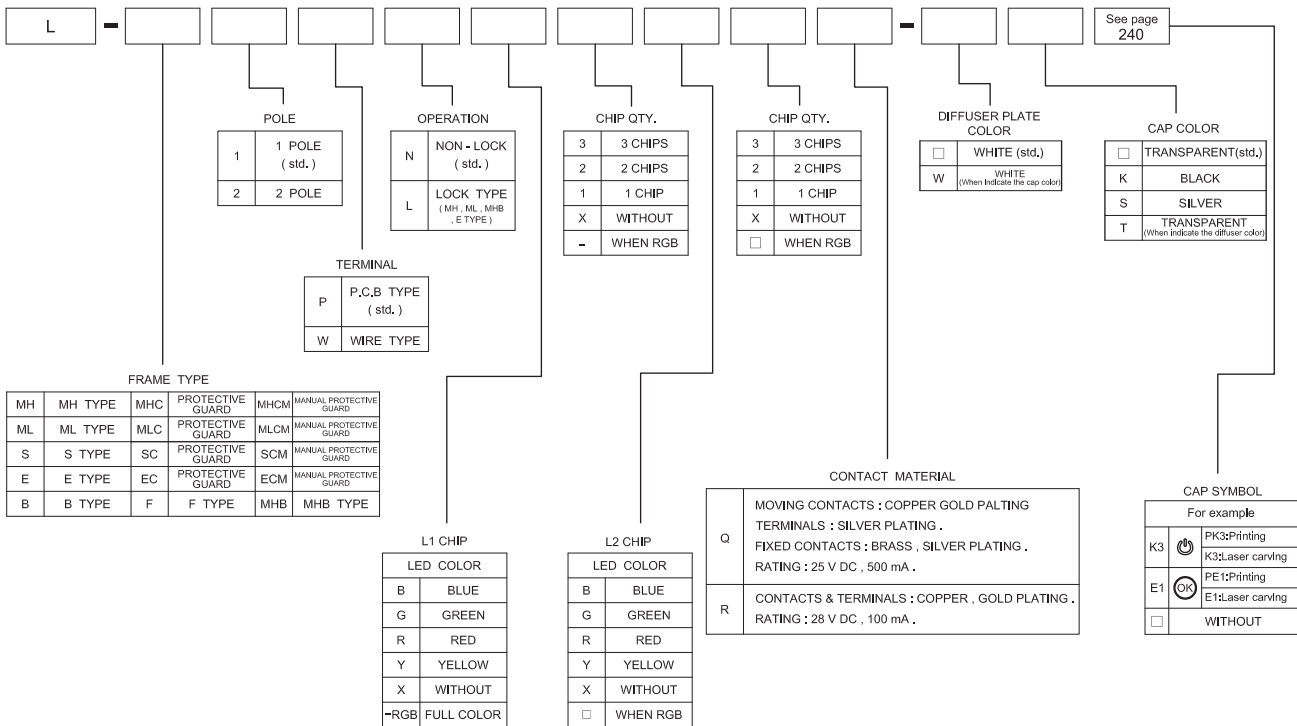


SWITCH SPECIFICATIONS	
POLE - POSITION	ON - < ON > for Momentary Type , ON - ON for Self - Lock Type SPDT , DPDT
CONTACT RATING	SEE CONTACT MATERIAL
CONTACT RESISTANCE	50 mΩ MAX. (SILVER CONTACT) ; 100 mΩ MAX. (GOLD PLATING CONTACT) , 1.5 V DC ; 100 mA , by Method of Voltage DROP
INSULATION RESISTANCE	100 MΩ MIN. 500 V DC
DIELECTRIC STRENGTH	Breakdown is not Allowable ; 1000 V AC for 1 Minute
OPERATING FORCE	200 ± 100 gf (SPDT) 300 ± 150 gf (DPDT)
OPERATING LIFE	200,000 cycles (SILVER CONTACT) 200,000 cycles (GOLD PLATING CONTACT)
OPERATING TEMPERATURE RANGE	-40°C ~ 85°C
TOTAL TRAVEL	2.2 ± 0.2 mm

LED SPECIFICATIONS		Value / LED Color						
 ATTENTION LEDs are Electrostatic Sensitive devices 	Unit	Blue	Pure Green	Red	Yellow	Orange	Green	White
		LUMINOUS INTENSITY@20mA Iv	mcd	72	413	216	170	253
Dominant Wavelength λD	nm	468	525	630	590	601	570	/
FORWARD VOLTAGE@20mA Vf	V	3.3	3.3	1.95	2	2.1	2.1	3.3

■ A single bin cannot be ordered, please contact us in advance if you need a particular bin sorting before placing your order to clarify the lead time, MOQ and pricing

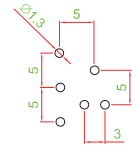
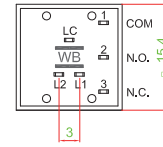
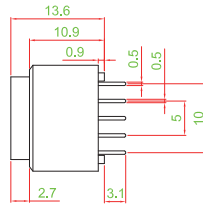
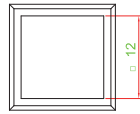
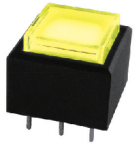
HOW TO ORDER



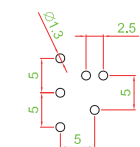
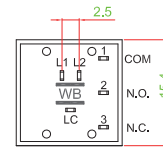
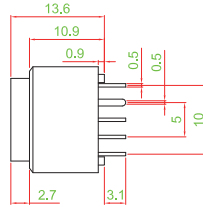
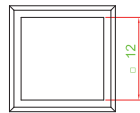


▶ FRAME TYPE

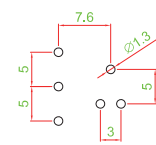
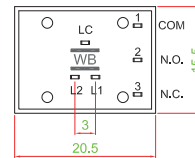
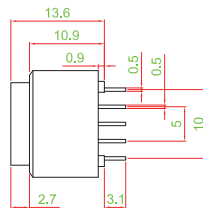
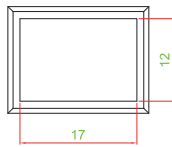
L - S1PN □□□□□



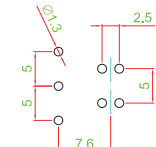
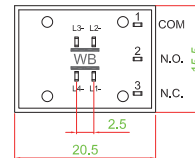
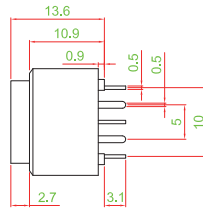
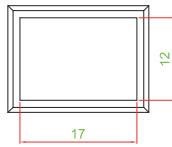
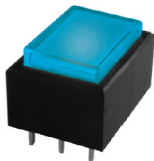
L - ML1PN □□□□□ Q



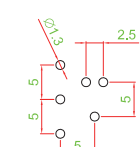
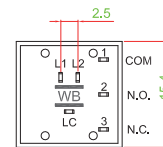
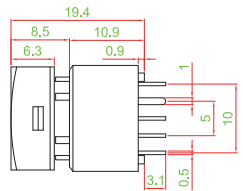
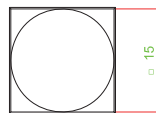
L - B1PN □□□□□ Q



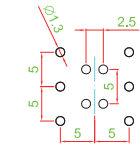
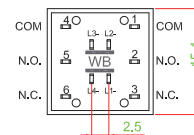
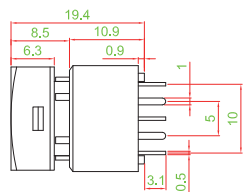
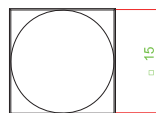
L - B1PN-RGB-Q



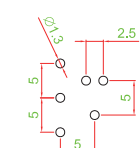
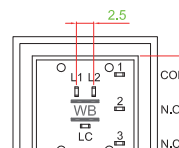
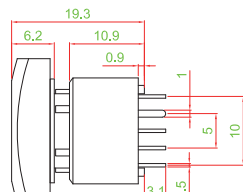
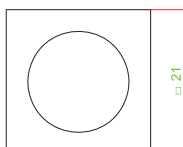
L - MH1PN □□□□□ Q



L - MH2PN-RGB-Q



L - MHB1PN □□□□□ Q



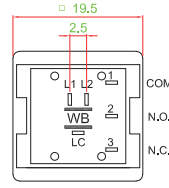
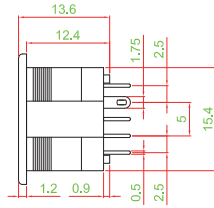
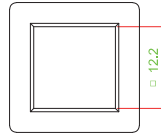
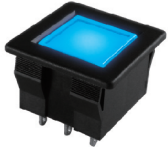
- TACT SWITCH
- PUSH BUTTON SWITCH
- LED TOUCH SENSOR SWITCH
- 5 DIRECTION NAVIGATION SWITCH WITH LED
- MEMBRANE SWITCH
- LED LIGHT BAR
- SLIDE SWITCH
- ROTARY SWITCH
- ROCKER SWITCH
- DETECT SWITCH
- ENCODER
- INTERRUPTER
- MINIATURE MICRO SWITCH
- TELEPHONE HOOK SWITCH
- DOOR SWITCH
- MINI SIZE SOCKET
- KNOB
- CAP SYMBOL



- TRACT SWITCH
- PUSH BUTTON SWITCH
- LED TOUCH SENSOR SWITCH
- 5 DIRECTION NAVIGATION SWITCH WITH LED
- MEMBRANE SWITCH
- LED LIGHT BAR
- SLIDE SWITCH
- PROTECTIVE GUARD
- ROTARY SWITCH
- ROCKER SWITCH
- DETECT SWITCH
- ENCODER
- INTERRUPTER
- MINIATURE MICRO SWITCH
- TELEPHONE HOOK SWITCH
- DOOR SWITCH
- MINI SIZE SOCKET
- KNOB
- CAP SYMBOL

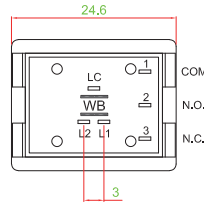
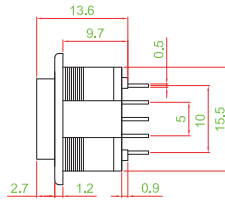
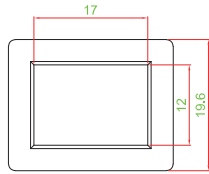
FRAME TYPE

L - E1WN□□□□Q



▶ PANEL CUT OUT	
PANEL THICK	W
0.75 ~ 1.25	17.6 ~ 17.8
1.25 ~ 2.0	17.8 ~ 18.0
2.0 ~ 3.0	18.0 ~ 18.2

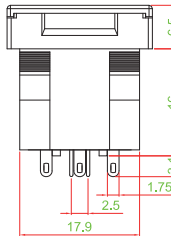
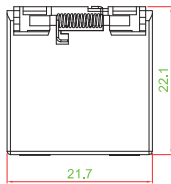
L - F1WN□□□□Q



▶ PANEL CUT OUT	
PANEL THICK	W
0.75 ~ 1.25	23.1 ~ 23.2
1.25 ~ 2.0	23.2 ~ 23.6
2.0 ~ 3.0	23.6 ~ 23.8

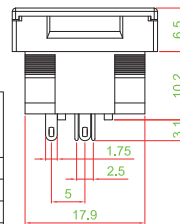
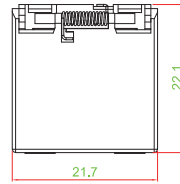
PROTECTIVE GUARD

L - MHC2WN□□□□Q



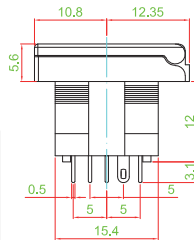
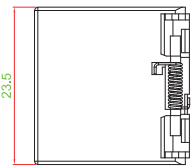
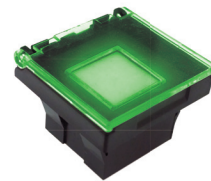
▶ PANEL CUT OUT	
PANEL THICK	W
0.75 ~ 1.25	20.1 ~ 20.3
1.25 ~ 2.0	20.3 ~ 20.5
2.0 ~ 3.0	20.5 ~ 20.7

L - MLC1WN□□□□Q



▶ PANEL CUT OUT	
PANEL THICK	W
0.75 ~ 1.25	20.1 ~ 20.3
1.25 ~ 2.0	20.3 ~ 20.5
2.0 ~ 3.0	20.5 ~ 20.7

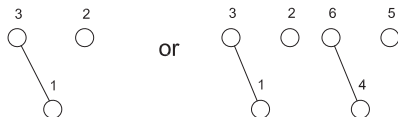
L - EC1WN□□□□Q



▶ PANEL CUT OUT	
PANEL THICK	W
0.75 ~ 1.25	17.6 ~ 17.8
1.25 ~ 2.0	17.8 ~ 18.0
2.0 ~ 3.0	18.0 ~ 18.2

CIRCUIT

SWITCH



LED

